



# FISCAL RESEARCH CENTER

**Population, Employment,  
and Income Trends for  
Georgia and Atlanta**

David L. Sjoquist

**Fiscal Research Center  
Andrew Young School of Policy Studies  
Georgia State University  
Atlanta, GA**

**FRC Report No. 263  
September 2013**



**ANDREW YOUNG SCHOOL**  
OF POLICY STUDIES

**POPULATION, EMPLOYMENT,  
AND INCOME TRENDS FOR  
GEORGIA AND ATLANTA**

David L. Sjoquist

**Fiscal Research Center  
Andrew Young School of Policy Studies  
Georgia State University  
Atlanta, GA**

**FRC Report No. 263  
September 2013**

# **Population, Employment, and Income Trends for Georgia and Atlanta**

---

## **Acknowledgments**

I would like to thank Carolyn Bourdeaux for her helpful comments on an earlier draft and Angela Ketterl, Ryan Kuhns, and Ric Kolenda for their excellent research assistance.

# Population, Employment, and Income Trends for Georgia and Atlanta

---

## Table of Contents

Acknowledgments .....	ii
I. Introduction.....	1
II. Population .....	3
III. Employment.....	8
IV. Income Growth .....	16
V. Summary .....	21
References .....	22
About the Author.....	23

# Population, Employment, and Income Trends for Georgia and Atlanta

---

## I. Introduction

This report explores the growth in population, employment, and income over the previous 50 years or so in Georgia and Atlanta<sup>1</sup> in order to gain a better understanding of what Georgia's economic growth might be going forward. While the growth of population, employment, and income declined during the Great Recession, it appears that the population growth rate has recovered. However, we find that the growth rate of employment and income has been slowing for some time, a factor that does not appear to be directly attributable to the recent recession.

Part of the difficulty in assessing economic trends is that Georgia and Atlanta were hit hard by the Great Recession, which started December 2007 and ended June 2009 (NBER, 2013), and have not enjoyed a very robust recovery. Georgia's employment level began to fall in January 2008 while Atlanta's employment began to decline in February 2008. Through February 2010 (when the losses in employment stopped) Georgia's employment fell by 8.2 percent while Atlanta's employment fell by 8.3 percent. Since then Georgia's employment has increased by 4.7 percent, while Atlanta's employment increased by 6.2 percent (through May 2013). In January 2007, the unemployment rate was 4.5 percent in Georgia and 4.6 percent in Atlanta. By January 2010, the unemployment rates reached their highs of 10.5 percent in Georgia and 10.8 percent in Atlanta. Current (May 2013) unemployment rates are 8.3 percent for Georgia and 8.2 percent for Atlanta.<sup>2</sup>

While Georgia and Atlanta have been slow to recover from the Great Recession, it is expected that as the U.S. economy continues to recover the Georgia and Atlanta economies will also improve. However, our analysis suggests that Georgia's economic growth was slowing prior to the Great Recession. The analysis raises the question of whether Georgia and Atlanta will return to the very robust economic growth that they experienced in the latter part of the 20<sup>th</sup> century.

---

<sup>1</sup> Atlanta refers to the metropolitan statistical area unless otherwise noted. We consider Atlanta since it accounts for about half of the state's economy.

<sup>2</sup> Employment data and unemployment rates are from the Bureau of Labor Statistics (<http://stats.bls.gov/sae>, accessed August 14, 2013). The state unemployment rates are seasonally adjusted, but the Atlanta unemployment rates are not. The Georgia Department of Labor reports an unemployment rate of 8.9 percent for the 10-county ARC region as of June 2013 ([http://www.dol.state.ga.us/pdf/pr/lf\\_atlanta-reg.pdf](http://www.dol.state.ga.us/pdf/pr/lf_atlanta-reg.pdf), accessed August 14, 2013).

## **Population, Employment, and Income Trends for Georgia and Atlanta**

---

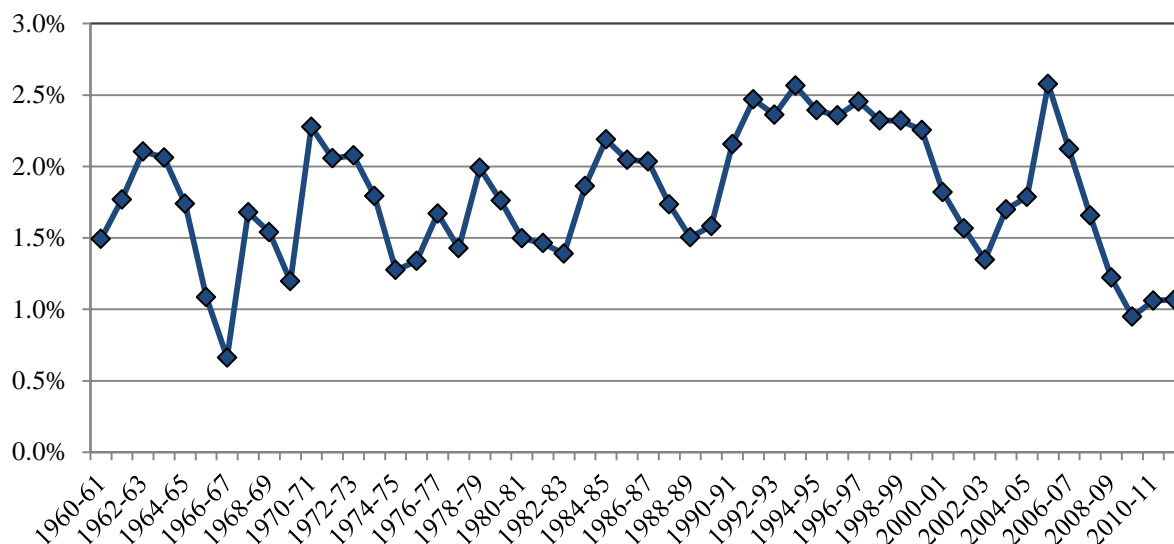
The following three sections explore the trends in population, employment, and income, respectively.

## Population, Employment, and Income Trends for Georgia and Atlanta

### II. Population

Georgia's population growth has exceeded the national growth rate for each of the past five decades. Figure 1 shows the annual population growth rate for 1960 through 2012. As can be seen, Georgia's population growth was less than 1 percent in only two years, and has generally been above 1.5 percent. And in 20 of those years Georgia's population growth rate exceeded 2 percent. Table 1 provides a summary of population growth by decade, while Figure 2 provides a more detailed picture for the period since 2000.

**FIGURE 1. GEORGIA'S ANNUAL POPULATION GROWTH RATE, 1960-2012**



Source: Bureau of Economic Analysis.

**TABLE 1. POPULATION GROWTH RATE FOR GEORGIA AND THE UNITED STATES, 1960-2010**

Period	-----Georgia-----			-----United States-----		Georgia Less U.S. Percentage Increase
	Percentage Increase	Annual Growth Rate	Georgia's Rank	Percentage Increase	Annual Growth Rate	
1960-1970	16.4%	1.5%	18 <sup>th</sup>	13.4%	1.3%	3.0%
1970-1980	19.1%	1.8%	16 <sup>th</sup>	11.4%	1.1%	7.7%
1980-1990	18.6%	1.7%	8 <sup>th</sup>	9.8%	0.9%	8.8%
1990-2000	26.4%	2.4%	6 <sup>th</sup>	13.2%	1.2%	13.2%
2000-2010	18.3%	1.7%	7 <sup>th</sup>	9.7%	0.9%	8.6%

Source: *U.S. Statistical Abstract* (various years) based on decennial censuses of population.

## Population, Employment, and Income Trends for Georgia and Atlanta

Table 1 shows the population growth rates for the past five decades for Georgia and the U.S., the difference between those two growth rates, and how Georgia's population growth rate ranks among states. Note that Georgia's population growth rate has been one of the highest in the U.S.; generally the states with higher growth rates than Georgia are smaller states in the southwest, which might be expected to have higher growth rates since they have a smaller base on which to build. For example, the three states with the fastest growth since 2000 are Arizona, Nevada, and Utah. Table 2 lists for each decade the states that had population growth rates that exceed Georgia's growth rate.

**TABLE 2. STATES WITH POPULATION GROWTH RATES GREATER THAN GEORGIA'S**

-----1960-1970-----		-----1970-1980-----		-----1980-1990-----		-----1990-2000----		---2000-2010----	
State	Growth Rate	State	Growth Rate	State	Growth Rate	State	Growth Rate	State	Growth Rate
Nev.	71.6	Nev.	63.6	Nev.	50.1	Nev.	66.3	Nev.	35.2
Fl.	37.1	Ariz.	53.1	Alaska	36.9	Ariz.	40.0	Ariz.	24.6
Ariz.	36.3	Fl.	43.5	Ariz.	34.8	Colo.	30.6	Utah	23.8
Alaska	34.1	Wyo.	41.3	Fl.	32.7	Utah	29.6	Idaho	21.2
Calif.	27.1	Utah	37.9	Calif.	26.0	Idaho	28.5	Texas	20.6
Md.	26.5	Alaska	32.8	N.H.	20.5			N.C.	18.5
Colo.	26.0	Idaho	32.4	Texas	19.4				
Del.	22.9	Colo.	30.8						
Hawaii	21.6	Texas	29.1						
N.H.	21.6	N.Mex.	28.1						
Conn.	19.6	Oreg.	25.9						
Wash.	19.6	Hawaii	25.3						
Utah	18.9	Wash.	21.1						
Oreg.	18.3	S.C.	20.5						
N.J.	18.2	Calif.	18.5						
Va.	17.2								
Texas	16.9								

Source: *U.S. Statistical Abstract* (various years) based on decennial censuses of population.

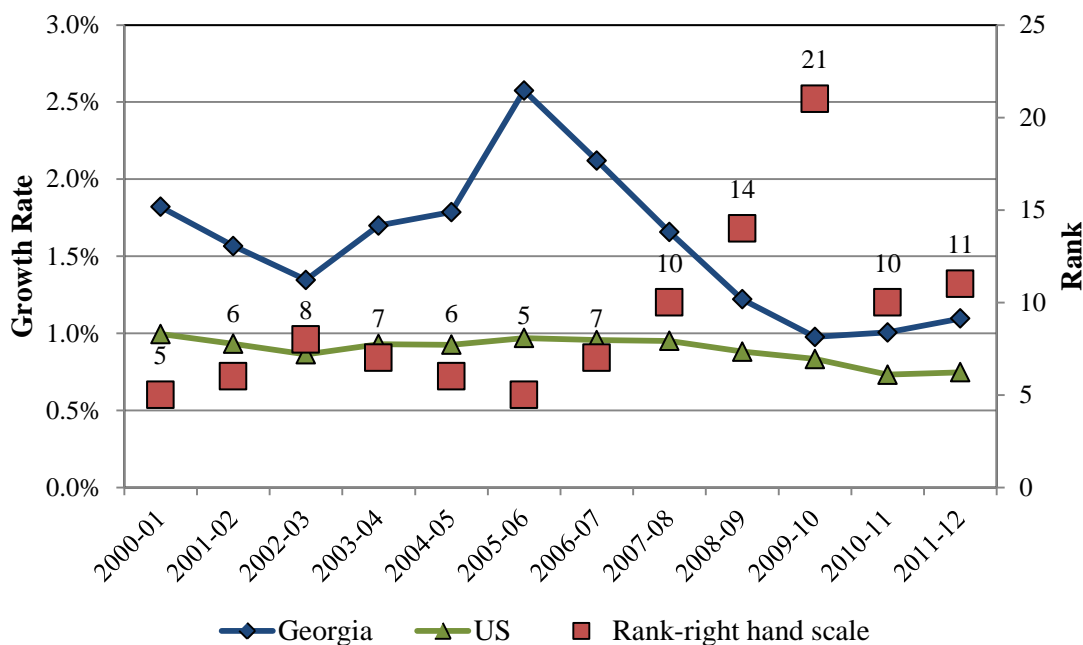
Georgia's population growth rate was particularly high during the 1990s. One possible explanation for which is the 1996 Summer Olympics. However, if that was the case one would expect that Atlanta would have accounted for a large percentage of the state's population growth during that decade. However, Atlanta's shares of the state's population growth was actually higher in the 1980s and in the years following the Olympics.



## Population, Employment, and Income Trends for Georgia and Atlanta

Figure 2 shows for the period 2000-2012 the annual population growth rates for Georgia and the U.S. and Georgia's annual rank. Note that the growth rate was still high prior to the Great Recession, in fact the growth rate for 2005-06 was the highest for the entire 1960-2012 period. However, Georgia's rank has fallen for more recent years, but that slowdown seems to correspond to the recent recession.

**FIGURE 2. ANNUAL GEORGIA AND U.S. POPULATION GROWTH RATES, 2000-2012**



Source: U.S. Bureau of the Census, Inter-Censal Estimates (as of July 1).

The annual population growth rate for Georgia fell below 1.5 percent during the Great Recession, and was about equal to the national growth rate for 2009-10, a year in which the state was ranked 22<sup>th</sup> in terms of its population growth rate. Except for two years, Georgia's population growth rate ranked 10th or higher since 2000. However, it does appear that Georgia's substantial population growth during the 1990s was something of an aberration and that population growth has returned to the levels seen in the 1970s and 1980s. During the 1990s, the population growth rate exceeded 2.25 percent for nine of the 10 years; there were only two other years during the 1960-2012 period when the growth rate exceeded 2.25 percent.

## Population, Employment, and Income Trends for Georgia and Atlanta

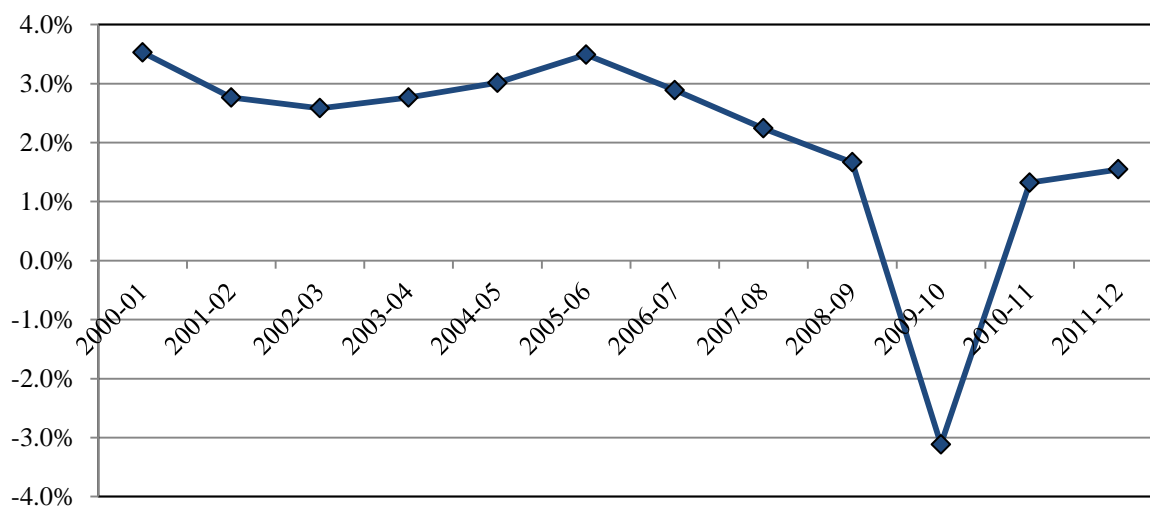
Table 3 shows the population growth for Atlanta. The Atlanta metropolitan area grew faster than Georgia and the growth rate ranks high among the 50 largest metropolitan areas. Figure 3 shows the annual percentage change in Atlanta's population since 2000. The growth rate begins to fall in 2007, and was -3.45 percent for 2009-10. The large decrease in population in 2010 is suspect and may reflect an understatement of the actual population in 2010 (there are claims to that effect) or an overstatement of the growth in population in previous years of that decade. Atlanta had the largest absolute and percentage decrease in reported population between 2009 and 2010 of the 68 MSAs with a population in excess of half a million, which suggests that either the 2009 reported population was overstated or the

**TABLE 3. ATLANTA'S POPULATION GROWTH RATE AND RANK, 1970-2010**

Period	Percentage Increase	Annual Growth Rate	Rank of Largest 50 MSAs
1970-1980	27.0%	2.4%	12 <sup>th</sup>
1980-1990	32.5%	2.9%	7 <sup>th</sup>
1990-2000	38.4%	3.3%	4 <sup>th</sup>
2000-2010	24.0%	2.2%	10 <sup>th</sup>

Source: *U.S. Statistical Abstract* (various years); Decennial Census of Population.

**FIGURE 3. ATLANTA'S ANNUAL POPULATION GROWTH RATES, 2000-2012**



Source: U.S. Bureau of the Census; Decennial Census for 2000 and 2010 and Inter-Censal Estimates (as of July 1) for other years.

## **Population, Employment, and Income Trends for Georgia and Atlanta**

---

2010 reported population was understated. Similar to Georgia, Atlanta's population growth rate seems to have returned to a rate closer to that experienced in the 1970-1990 period.

Population growth comes from three sources: natural increases, i.e., births exceeding deaths, migration from other states, and immigration from outside the U.S. Of Georgia's population increase between 2000 and 2009, 41.7 percent was accounted for by natural increase, 34.5 percent by migration, and 17.2 percent by immigration. Georgia has a relatively young population; in 2008 Georgia ranked fourth in the percentage of the population under 18 years of age. Thus, Georgia's natural increase will likely be larger than most states. Georgia's future population growth rate will depend upon whether current U.S. residents continue to migrate to the South and to Georgia in particular, as well as upon Federal immigration policy. The state has developed population projections through 2030; the implied annual growth rate falls from 1.62 percent for 2013-14 to 1.44 percent for 2029-2030. These population growth rates are at the lower end of the range of growth rates for the period 1960-2012. Given the trends and the likely lower migration rates within the U.S., these projected growth rates seem reasonable.

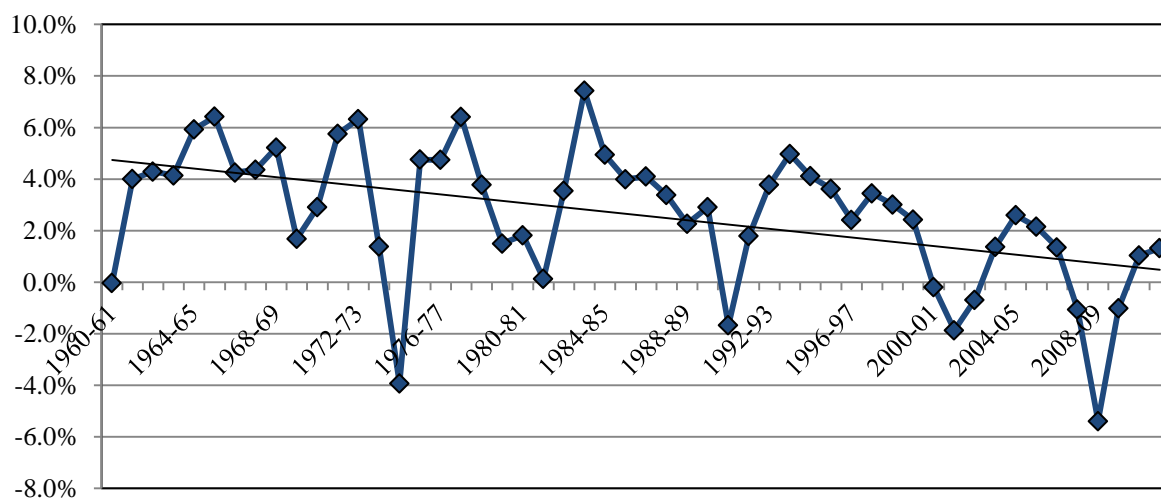
## Population, Employment, and Income Trends for Georgia and Atlanta

### III. Employment

Population growth is a reflection of the strength of the economy. However, growth in employment is key to a strong economy and continued population growth.

Figure 4 shows the annual employment growth rate for the period 1960-2012. There are several things to note. First, there is significant variation from year to year in the growth rates. Second, from 1960 to about the mid-1980s, the growth rate varied generally between 3 percent and 6 percent. Third, the years with decreases in employment correspond to economic recessions, with the 5.4 percent decrease during the Great Recession being the largest percentage decrease over the period. Fourth, there has been a general decrease in the annual growth rates, as seen by the trend line in Figure 4; the trend is still negative even if we exclude the years after 2007.

**FIGURE 4. GEORGIA'S ANNUAL EMPLOYMENT GROWTH RATE, 1960-2012**

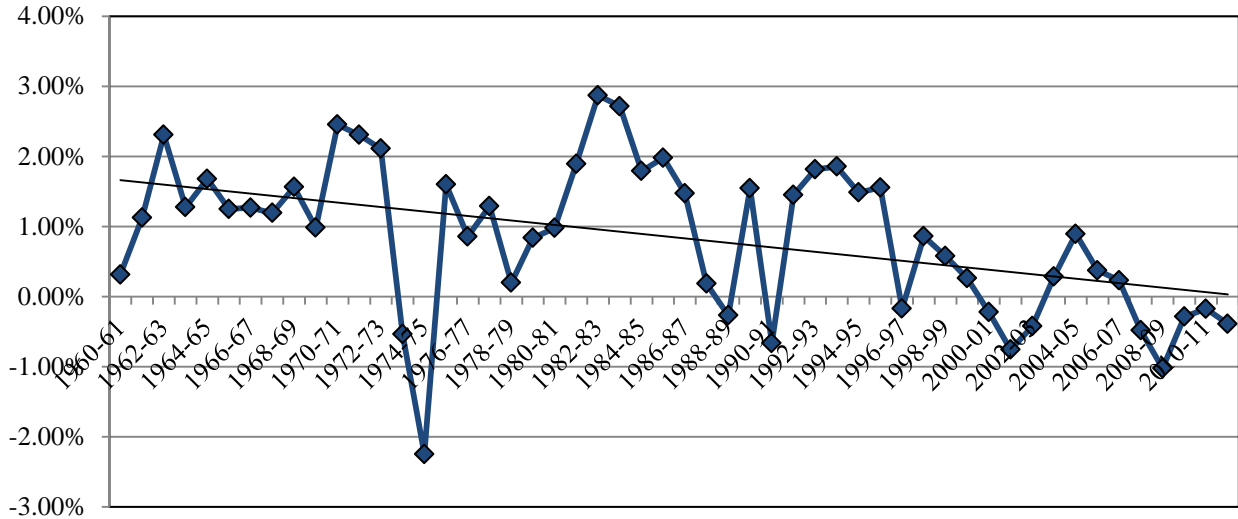


Source: Bureau of Labor Statistics.

To account for changes due to economic conditions, we subtracted the annual growth rate for the U.S. from Georgia's growth rate. The results are shown in Figure 5. Georgia's employment growth rate has generally exceeded that for the U.S. Between 1960 and 2000, Georgia's employment growth rate exceeded the U.S. rate in 35 of the 40 years; the only years when Georgia's employment growth rate was less than the U.S. rate are years of

## Population, Employment, and Income Trends for Georgia and Atlanta

**FIGURE 5. GEORGIA LESS U.S. GROWTH RATES, 1960-2012**



Source: Bureau of Labor Statistics.

economic recession. However, for the past 12 years, Georgia’s growth rate has been less than the U.S. rate eight times. Over the period 1960-2012, the extent to which Georgia’s growth rate exceeded the U.S. growth rate has declined, as seen by the trend line. The trend line is negatively sloped even if we exclude the period 2007-2012 or 2000-2012, and thus the relative decrease in Georgia’s job growth is not an outcome of the slower growth in the past decade. We also considered the percentage difference in growth rates and found the same pattern, which implies that it is not due to an overall decrease in the U.S. employment growth rate. Thus, it appears that Georgia’s employment growth rate has been slowing and that it has been slowing relative to the U.S. employment growth rate.

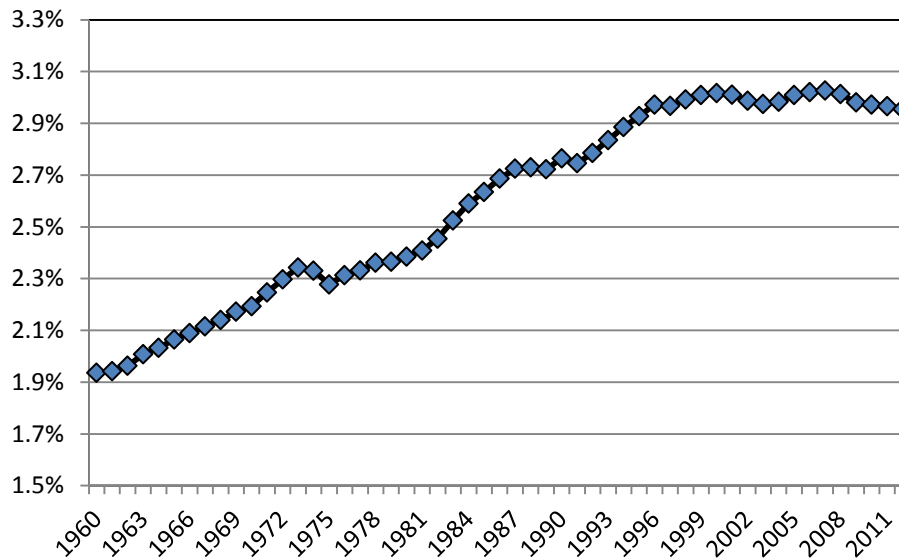
One possible explanation for the trend in the difference in growth rates is that the interstate variation in employment growth has decreased, meaning there are fewer states with significantly larger or smaller growth rates relative to other states. We calculated the standard deviation of growth rates and the difference between the largest and smallest growth rates for each year 1970-2012. Both measures suggest that the variation in employment growth rates has gotten smaller.

Figure 6 shows Georgia employment as a percent of total U.S. employment from 1960 to 2012. The percentage increased nearly continuously until about 1995. Since then,

## Population, Employment, and Income Trends for Georgia and Atlanta

Georgia employment has been a pretty constant 3 percent of U.S. employment. Georgia's share of employment will increase if its employment growth rate exceeds the U.S. employment growth rate. That was the case until about 1995 at which point the two annual growth rates were the same and essentially remain that way since.

**FIGURE 6. GEORGIA EMPLOYMENT AS A PERCENT OF U.S. EMPLOYMENT**



Source: Bureau of Labor Statistics.

Table 4 provides a summary of employment growth for each of the past five decades, making it somewhat easier to see the patterns in Figures 4 and 5. Until this past decade Georgia's employment growth rate has been very robust, exceeding the U.S. growth rate, and for three of the five decades Georgia's employment growth rate ranked among the top ten states. This past decade, however, has seen a decrease in employment, which is unprecedented since the 1930s, and is the result of the two recessions during the decade (2000-2001 and 2007-2009) and Georgia's slow economic recovery from each recession. Table 4 reinforces what is seen in Figures 4 and 5, that is, that the rate of growth has declined for both Georgia and the U.S. and that the difference has gotten smaller.

## Population, Employment, and Income Trends for Georgia and Atlanta

**TABLE 4. GEORGIA AND U.S. EMPLOYMENT GROWTH RATE AND RANK, 1960-2010**

Period	-----Georgia-----			-----United States-----		
	Percentage Increase	Annual Growth Rate	Georgia's Rank	Percentage Increase	Annual Growth Rate	Georgia Less U.S.
1960-1970	48.2%	4.0%	9 <sup>th</sup>	30.8%	2.7%	17.4%
1970-1980	38.7%	3.3%	23 <sup>rd</sup>	27.5%	2.5%	11.2%
1980-1990	38.6%	3.3%	5 <sup>th</sup>	20.9%	1.9%	7.7%
1990-2000	32.0%	2.8%	7 <sup>th</sup>	20.4%	1.9%	11.6%
2000-2010	-2.7%	-0.3%	34 <sup>th</sup>	-1.4%	-0.1%	-1.3%

Source: U.S. Bureau of Labor Statistics. Rank is among the 50 states plus D.C.

Table 5 shows the employment growth rate for the past four decades for the Atlanta metropolitan area. For the first three decades Atlanta's employment growth far exceeded the U.S. and Georgia's employment growth rate. The past decade however has seen a decrease in employment in Atlanta, but the percentage decrease was less than for the state of Georgia.

**TABLE 5. ATLANTA'S EMPLOYMENT GROWTH RATE**

Period	Percentage Decrease
1970-1980	41.9%
1980-1990	47.6%
1990-2000	42.4%
2000-2010	-0.8%

Source: 1970-80 and 1980-1990 are from the Bureau of Economic Analysis; 1990-2000 and 2000-2010 are from the U.S. Bureaus of Labor Statistics.

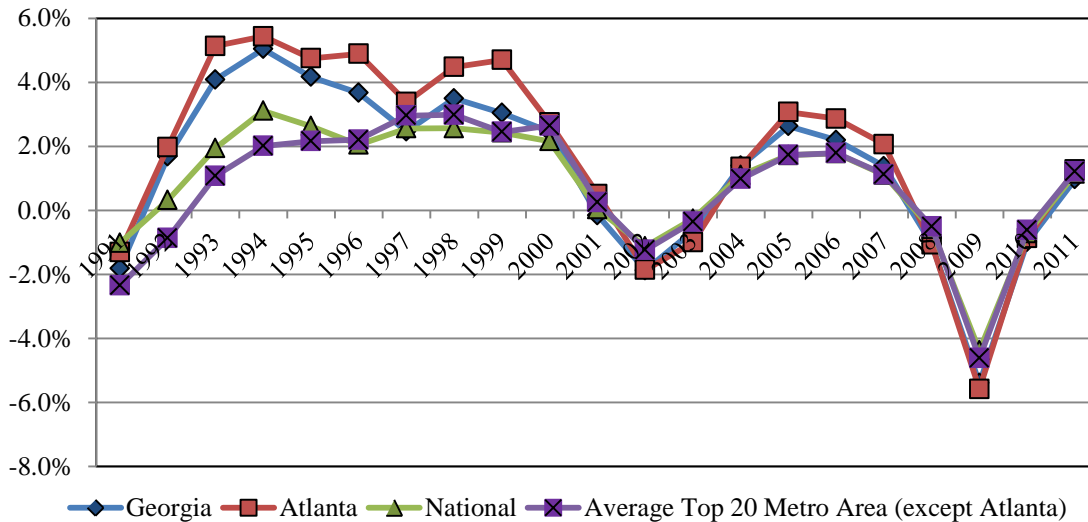
Figure 7 plots the annual growth rates for the U.S., Georgia, the largest 20 metropolitan areas, and Atlanta for the period 1990-2011. This figure provides more details for that 20-year period than Table 5, and reinforces what is seen in Table 5.

There are several potential explanations for Georgia's slowing employment growth rate, and we list many of the potential factors that might be a cause of the slower growth. However, we don't attempt to provide empirical analysis of these potential explanations.

- ▶ As a state's economy grows, it gets harder to maintain the same high growth rate. We constructed figures equivalent to Figures 4 and 5 for Florida and Texas. The figures look similar to those for Georgia, i.e., declining employment growth rates and declining growth rates relative to the U.S. growth rates.

## Population, Employment, and Income Trends for Georgia and Atlanta

**FIGURE 7. GROWTH RATES, 1990-2011**



Source: Bureau of Labor Statistics.

- ▶ The growth rate in the southeast, relative to the national growth rate, has declined. Thus, Georgia could be suffering from a regional effect on employment growth. But, Georgia's growth rate is slowing relative to the growth rate for the southeast, so it is more than a regional effect that is causing the slower growth rate.
- ▶ At one time Georgia sold itself as a source of low wages and cheap land in order to attract industries such as textile plants. However, it may be that relative wages and other costs have increased, reducing the attractiveness of Georgia for firms seeking low cost operations. At the same time, Georgia's may not have expanded the workforce with the higher skill levels needed to attract other types of industries.
- ▶ It is possible that the relative low performance of the K-12 education system is slowing growth. The skill level required for most jobs has increased, which means an educated labor force has become increasingly important for attracting jobs. On lots of dimensions, Georgia's K-12 education system performs well below the national average. On the other hand, Georgia ranks 19th in terms of the percentage of the



## **Population, Employment, and Income Trends for Georgia and Atlanta**

---

population with at least a college degree, a factor frequently associated with economic growth.

- ▶ Job growth is the net difference between new jobs added and existing jobs that are lost, and it may be that Georgia has increased the rate at which it has lost jobs. If so, it would mean that Georgia would have to increase the number of new jobs in order to retain the same growth rate. The U.S. Bureau of Labor Statistics reports gross gains and gross losses of jobs. We calculated gross job losses relative to total employment for Georgia for 1993 and 2012 (the first and latest years these data are available); we find no indication that gross job losses as a share of total employment have increased. Nor has there been a change relative to the U.S.
  
- ▶ The loss of jobs due to global forces that shifted jobs to developing countries has been substantial, particularly for manufacturing. In Georgia, for example, the loss of textile jobs has been very substantial; since 1980 Georgia has lost 70 percent of its textile jobs. Between 1990 and 2012 Georgia lost 32.2 percent of its manufacturing jobs, but that is about equal to the 32.6 percent loss of manufacturing jobs for the U.S. The loss of manufacturing jobs over the 1990-2012 period as percentage of total 1990 nonfarm employment was 5.6 percent for Georgia, about the same as the 5.3 percent for the U.S. Thus, it does not appear that the relative slowdown in Georgia's employment growth was driven by global forces.
  
- ▶ Georgia may be pursuing the wrong economic development strategy, which currently seems to be focused on providing tax incentives. Perhaps a strategy that focused more on providing a better labor force, infrastructure, and amenities would result in greater net job growth.
  
- ▶ It has been suggested that the increasing traffic congestion, both in the metro area and on the interstate highways throughout the state, and the issue of water availability are factors slowing economic growth. However, while water supply for Georgia is an

## Population, Employment, and Income Trends for Georgia and Atlanta

---

issue, the concern about water has only recently received wide publicity, and thus is not likely the cause of the longer term job growth pattern.

- ▶ The economics literature suggests that at the margin taxes do matter for economic growth, and thus a bad tax structure and high taxes on businesses will curtail growth. But Georgia's taxes are low (Georgia ranks 41<sup>st</sup> in state and local taxes a percent of personal income), have not increased over the past 30 years, as measured by taxes as a share of personal income. Total sales tax rate has increased with the adoption of additional local option sales tax, but other tax rates have not changed. Surrounding and competitor states have not significantly changed their tax systems such that Georgia has become less competitive (Buschman 2010).
- ▶ There are frequent reports that Georgia lacks the financial capital needed for new/expanding businesses. To the extent that such financial capital has become a more important asset in attracting and growing business, it may explain some of the slowdown in Georgia's employment growth rate.
- ▶ Perhaps there is a "leadership vacuum." There are fewer business leaders with strong ties to Georgia, either because they did not grow up here or moved here to temporarily take over running a business. And, the market for local businesses such as banks, utilities, accounting firms, law firms, etc. has become much more national and international. This suggests that business leaders may not be as invested in the economic success of Atlanta and Georgia. In addition, local government has become more fractionalized, particularly in the Atlanta metro area. For example, the City of Atlanta (both a political and economic center) dominated the region in the 1960s and 1970s. However, the growth of surrounding counties has meant that it is harder for the Atlanta region, and the state, to speak and act as one. So, perhaps Georgia and Atlanta have slowly lost some of its drive to push economic growth.

## **Population, Employment, and Income Trends for Georgia and Atlanta**

---

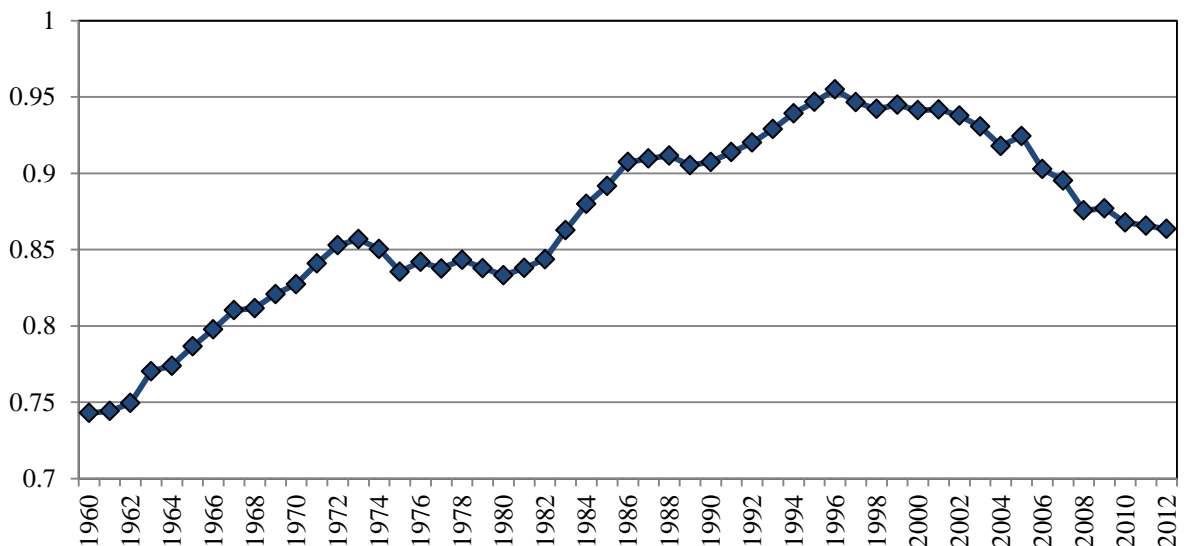
- ▶ It is also possible that Georgia and Atlanta have lost the perception that this is an exciting place. To the extent that businesses are attracted to places that are seen as successful and energetic, then a loss of that reputation could slow economic growth.

## Population, Employment, and Income Trends for Georgia and Atlanta

### IV. Income Growth

While employment growth is one aspect of economic development, an increase in income is an even more important outcome of economic development since the goal of economic development should be to increase the standard of living for residents. Figure 8 shows the ratio of personal income per capita for Georgia to that for the U.S. for the period 1960 to 2012. As can be seen, until 1996 per capita income in Georgia increased nearly continuously relative to that for the U.S., although the trend was flat during much of the 1970s. This trend of increasing relative income can be traced back to well before WWII. In 1996, per capita income in Georgia relative to the U.S. average reached its peak of 95.5 percent. Since then relative income has been declining, and by 2012, the ratio had fallen to 86.4 percent. Had the ratio remained at 95 percent, per capita income in Georgia would have been \$3,689 greater, which is 10.0 percent of the 2012 per capita income.

**FIGURE 8. RATIO OF GEORGIA INCOME PER CAPITA TO U.S. INCOME PER CAPITA, 1960-2012**



Source: Bureau of Economic Analysis.

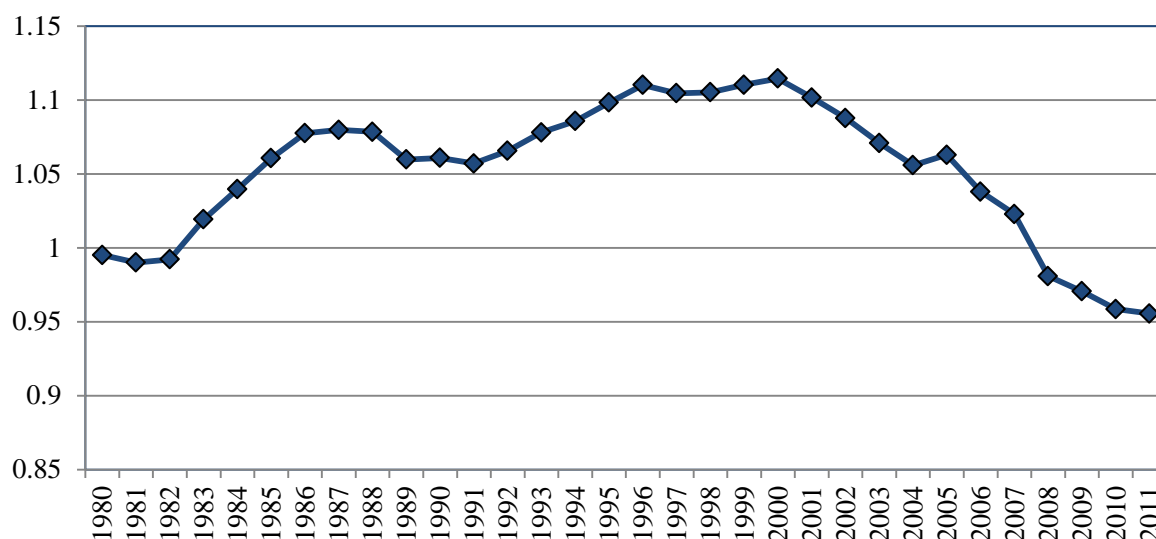
The decrease of 9.1 percentage points between 1996 and 2012 in Georgia's per capita income relative to the U.S. was exceeded by only two states, Nevada and Michigan. There were only three other states that had larger decreases than Georgia from their peak ratio over

## Population, Employment, and Income Trends for Georgia and Atlanta

the period 1990 to 2012. Thus, while 20 states experienced a decrease in the ratio of state per capita income to that of the U.S., Georgia suffered a particularly large decrease.

A similar pattern can be seen for Atlanta in Figure 9, although relative per capita income in Atlanta reached a peak of 114 percent of the U.S. average in 2000, before the trend was reversed.

**FIGURE 9. RATIO OF ATLANTA INCOME PER CAPITA TO U.S. INCOME PER CAPITA, 1980-2011**



Source: Bureau of Economic Analysis.

Turner (2009) explored several possible explanations for the relative decline in income. One partial explanation is that the children comprised a significant component of the increase in population and since they add no income to the total the result in a reduction in the average relative to the U.S.

Another possible cause is an increase in the percentage of the adult population that does not work, for example, because of age, disability, or a personal decision. In 1995, 63.8 percent of Georgians over 16 years of age were employed, but by 2005, 64.0 percent were employed. Thus, there was essentially no change in Georgia, as was also the case for the U.S.

## Population, Employment, and Income Trends for Georgia and Atlanta

It is also possible that the relative decline is due to slower growth in wage rates. During the 1980s and 1990s, the growth in real earnings per employee in Georgia exceeded that for the U.S., as can be seen in Table 6.<sup>3</sup> However, since 2000, earnings per worker in real terms decreased in Georgia. Furthermore, the growth rate of Georgia's earning per worker has slowed relative to the U.S.

**TABLE 6. GROWTH OF INFLATION ADJUSTED EARNINGS PER WORKER, GEORGIA**

Period	-----Growth Rate-----			Georgia Growth
	----Georgia---	Georgia Rank	----U.S.----	Rate Less U.S. Growth Rate
1980-1990	13.3%	9 <sup>th</sup>	5.4%	7.9%
1990-2000	18.9%	8 <sup>th</sup>	14.0%	4.9%
2000-2010	-5.7%	49 <sup>th</sup>	2.3%	-8.0%

Source: U.S. Bureau of Economic Analysis data and Consumer Price Index. Rank is among the 50 states plus D.C.

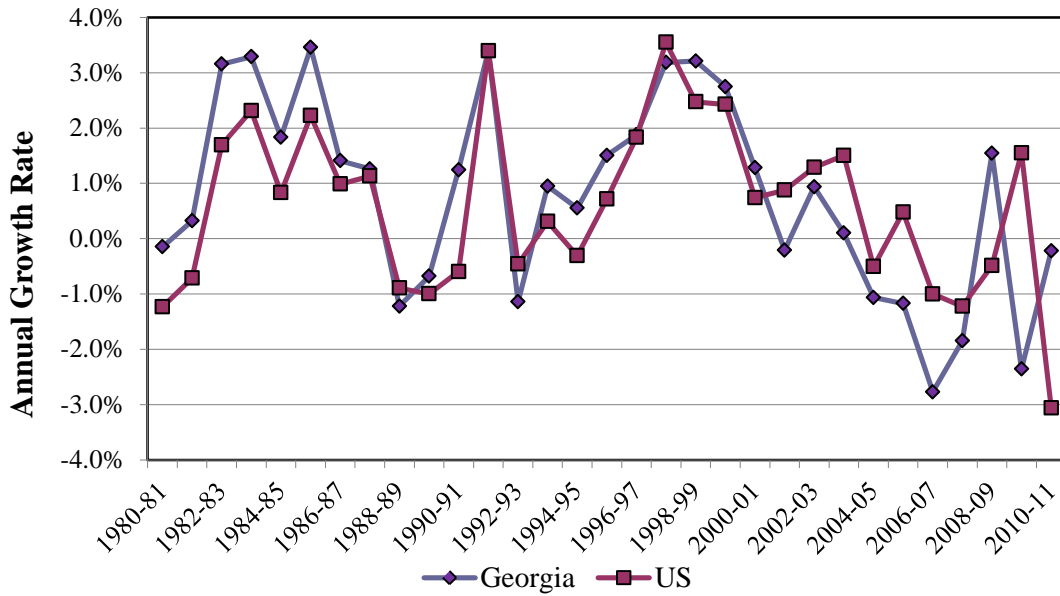
To further explore the relationship between the U.S. and Georgia's growth rate of earnings per worker consider Figure 10, which compares the growth rates for the period 1980-2010, and Figure 11, which plots the difference in the two growth rates. During the period 1980 to 2000, the growth in earnings per worker for Georgia generally exceeded that for the U.S.; in only three years was that not the case. However, since 2000 Georgia's growth rate of earnings per worker has been less than the U.S. growth rate in eight of the 10 years.

The result is that earnings per worker in Georgia relative to the U.S. increased from 87.7 percent in 1980 to 94.3 percent in 1990 and 98.8 percent in 2001 (Figure 11). However, by 2011, earnings per worker in Georgia had fallen to 90.1 percent of the U.S. average. Had the ratio remained at the 2001 level, earnings per worker in 2011 would have been \$3,058 greater. Since total employment in 2011 was about 54 percent of Georgia's population the additional \$3,058 earnings per worker is about \$1,651 per capita. While the trend in earnings per worker is an important factor in explaining the pattern of income per capita, it is clear there are other factors that have affected relative income per capita.

<sup>3</sup> Earnings per worker were calculated as total earnings by place of work divided by total employment; data were from the U.S. Bureau of Economic Analysis.

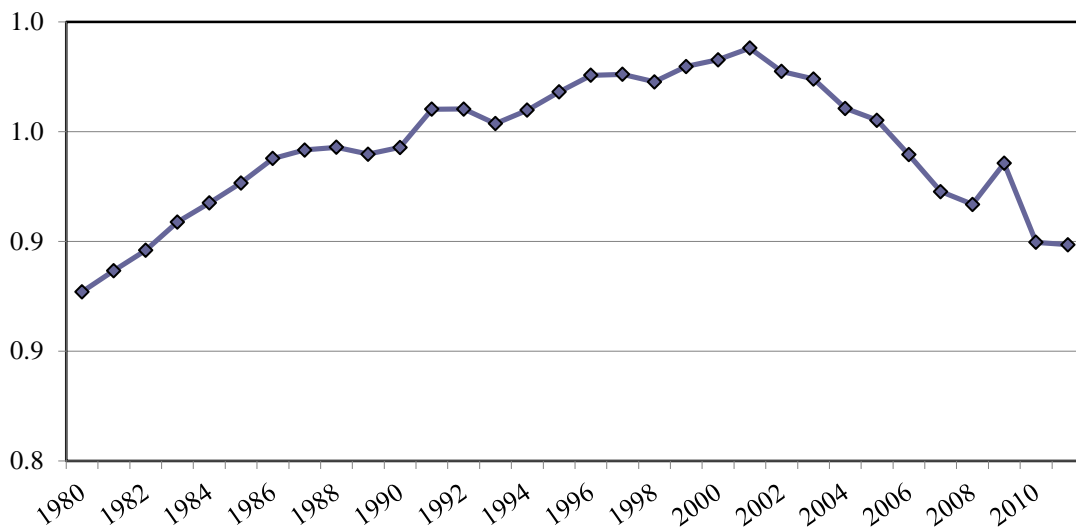
## Population, Employment, and Income Trends for Georgia and Atlanta

**FIGURE 10. GROWTH RATE OF EARNING PER WORKER, INFLATION ADJUSTED, 1980-2011**



Source: Calculated from Bureau of Economic Analysis data on earnings and employment.

**FIGURE 11. RATIO OF GEORGIA EARNINGS PER EMPLOYEE TO U.S. EARNINGS PER EMPLOYEE, 1980-2011**

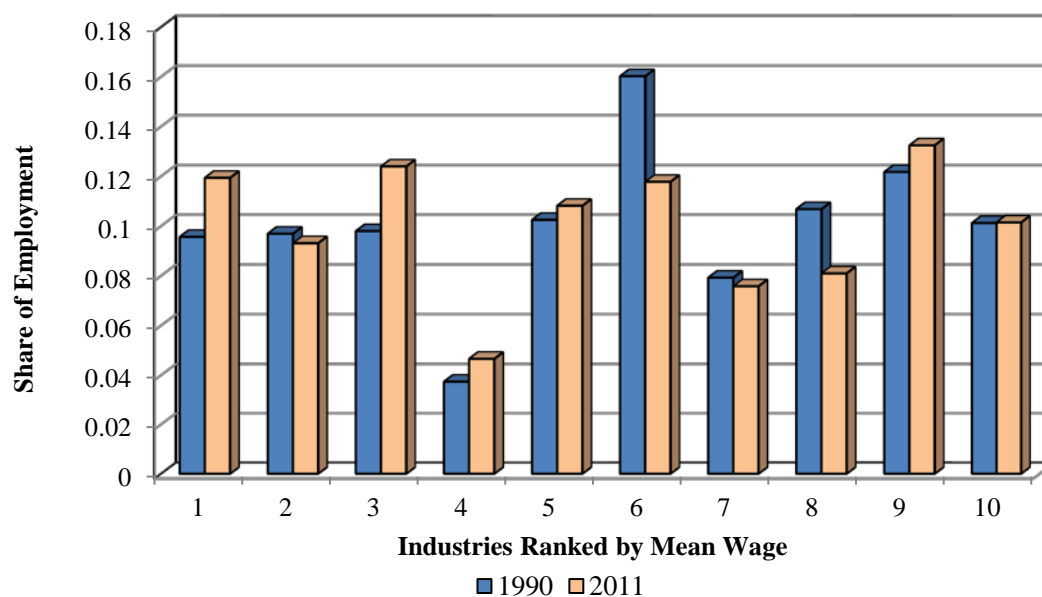


Source: Calculated from Bureau of Economic Analysis data on earnings and employment.

## Population, Employment, and Income Trends for Georgia and Atlanta

Obviously earnings per worker will fall if the state adds more jobs that pay low wages or loses jobs that pay higher wages. To explore this consider Figure 12, which shows how the change in the distribution of employment between 1990 and 2011 by industry has affected average wages. To construct Figure 12 we took the 56 industries identified in the employment data and ordered them by the average wage in the industry. We then combined the industries into 10 groups and calculated the percentage of total employment in each group. Thus, group 1 represents the 9.6 percent of jobs in industries with the lowest wages, while group 10 represents the 9.0 percent of jobs in industries with the highest wages. Using the same ordering, we calculated the percentage of 2011 employment in each of the 10 industry groupings. What we observe is that the share of employment in industries paying the lowest wages increased between 1990 and 2011 while the share of employment in higher wage industries decreased. In other words, Georgia has added more jobs in low wage industries than in high wage industries. An alternative, and perhaps better, approach would be to consider the change the distribution of employment by occupation. However, there is no consistent listing of occupations over the period 1990 to 2011.

**FIGURE 12. DISTRIBUTION OF EMPLOYMENT, 1990 AND 2011**





## **Population, Employment, and Income Trends for Georgia and Atlanta**

---

### **V. Summary**

Over the past 50 years, Georgia has enjoyed remarkable growth of population, employment, and income. However, the growth rates of employment and income have slowed and have slowed relative to the growth rate for the U.S. This slowing has not been driven by the Great Recession. Several possible explanations for this pattern are presented, but we provide no analysis of the likelihood that any one of them in fact is a cause of the slowdown.

## **Population, Employment, and Income Trends for Georgia and Atlanta**

---

### **References**

Buschman, Robert (2010). “A Review of State Revenue Actions, 1999-2010.” FRC Report 217. Atlanta GA: Andrew Young School of Policy Studies, Georgia State University.

National Bureau of Economic Research (2013). “U.S. Business Cycle Expansions and Contractions.” Available at <http://www.nber.org/cycles/cyclesmain.html>. Accessed August 15, 2013.

Turner, Sean (2009). “Georgia Per Capita Income: Identifying the Factors Contributing to the Growing Income Gap with Other States.” FRC Report 204. Atlanta GA: Andrew Young School of Policy Studies, Georgia State University.

## **Population, Employment, and Income Trends for Georgia and Atlanta**

---

### **About the Author**

**David L. Sjoquist** is Professor of Economics, holder of the Dan E. Sweat Distinguished Scholar Chair in Educational and Community Policy at the Andrew Young School of Policy Studies at Georgia State University. He has published widely on topics related to state and local public finance and urban economics. He holds a Ph.D from the University of Minnesota.

### **About The Fiscal Research Center**

The Fiscal Research Center (FRC) provides nonpartisan research, technical assistance and education in the evaluation and design of state and local fiscal and economic policy. FRC Reports, Policy Briefs, and other publications maintain a position of neutrality on public policy issues in order to safeguard the academic freedom of the authors. Thus, interpretations or conclusion in FRC publications should be understood to be solely those of the author(s).

For more information on the Fiscal Research Center, call 404.413.0249 or visit our website at [www.aysps.gsu.edu/frc](http://www.aysps.gsu.edu/frc).

## Population, Employment, and Income Trends for Georgia and Atlanta

### FISCAL RESEARCH CENTER STAFF

<p>Sally Wallace, Director (FRC), Chair and Professor of Economics          Carolyn Bourdeaux, Associate Director (FRC) and Associate Professor (PMAP)          Peter Bluestone, Senior Research Associate          Robert Buschman, Senior Research Associate          Margo Doers, Senior Administrative Coordinator          Huiping Du, Research Associate          Jaiwan M. Harris, Business Manager</p>	<p>Kenneth J. Heaghney, Research Professor of Economics          Kim Hoyt, Program Coordinator          Lakshmi Pandey, Senior Research Associate          Dorie Taylor, Assistant Director          Arthur D. Turner, Microcomputer Software Technical Specialist          Nick Warner, Research Associate          Laura A. Wheeler, Senior Research Associate</p>
--	--

### ASSOCIATED GSU FACULTY

<p>Roy W. Bahl, Regents Professor of Economics          H. Spencer Banzhaf, Associate Professor of Economics          Rachana Bhatt, Assistant Professor of Economics          Eric J. Brunner, Associate Professor of Economics          Pam Scholder Ellen, Associate Professor of Marketing          Paul Ferraro, Professor of Economics          Martin F. Grace, Professor of Risk Management and Insurance          Shiferaw Gurmu, Professor of Economics          W. Bartley Hildreth, Professor of PMAP          Charles Jaret, Professor of Sociology          Gregory B. Lewis, Chair and Professor of PMAP          Cathy Yang Liu, Assistant Professor of PMAP          Jorge L. Martinez-Vazquez, Director (ICPP) and Regents Professor of Economics</p>	<p>John W. Matthews, Part-Time Instructor, PMAP          Harvey Newman, Professor of PMAP          Theodore H. Poister, Professor of PMAP          Mark Rider, Associate Professor of Economics          Glenwood Ross, Clinical Associate Professor of Economics          Bruce A. Seaman, Associate Professor of Economics          Cynthia S. Searcy, Assistant Dean of Academic Programs and Professor of PMAP          David L. Sjoquist, Director (DPO) and Professor of Economics          Rusty Tchernis, Associate Professor of Economics          Erdal Tekin, Associate Professor of Economics          Neven Valev, Associate Professor of Economics          Mary Beth Walker, Dean (AYSPS) and Professor of Economics          Katherine G. Willoughby, Professor of PMAP</p>
---	---

### FORMER FRC STAFF/GSU FACULTY

<p>James Alm, Tulane University          Richard M. Bird, University of Toronto          Tamoya A. L. Christie, University of West Indies          Kelly D. Edmiston, Federal Reserve Bank of Kansas City          Robert Eger, Florida State University          Nevbahar Ertas, University of Alabama/Birmingham          Alan Essig, Georgia Budget and Policy Institute          Dagny G. Faulk, Ball State University          Catherine Freeman, HCM Strategists          Richard R. Hawkins, University of West Florida          Zackary Hawley, Texas Christian University          Gary Henry, University of North Carolina, Chapel Hill          Julie Hotchkiss, Federal Reserve Bank of Atlanta</p>	<p>Mary Mathewes Kassis, University of West Georgia          Stacie Kershner, Center for Disease Control          Nara Monkam, University of Pretoria          Ross H. Rubenstein, Syracuse University          Michael J. Rushton, Indiana University          Rob Salvino, Coastal Carolina University          Benjamin P. Scafidi, Georgia College &amp; State University          Edward Sennoga, Makerere University, Uganda          William J. Smith, University of West Georgia          Jeanie J. Thomas, Consultant          Kathleen Thomas, Mississippi State University          Geoffrey K. Turnbull, University of Central Florida          Thomas L. Weyandt, Atlanta Regional Commission          Matthew Wooten, University of Georgia</p>
---	---

### AFFILIATED EXPERTS AND SCHOLARS

<p>Kyle Borders, Federal Reserve Bank of Dallas          David Boldt, State University of West Georgia          Gary Cornia, Brigham Young University</p>	<p>William Duncombe, Syracuse University          Ray D. Nelson, Brigham Young University</p>
---	---

KEY: PMAP: Public Management and Policy. FRC: Fiscal Research Center. ICPP: International Center for Public Policy. DPO: Domestic Programs. AYSPS: Andrew Young School of Policy Studies.

## Population, Employment, and Income Trends for Georgia and Atlanta

---

### RECENT PUBLICATIONS

(All publications listed are available at <http://frc.aysps.gsu.edu> or call the Fiscal Research Center at 404/413-0249, or fax us at 404/413-0248.)

*Population, Employment, and Income Trends for Georgia and Atlanta* (David L. Sjoquist). This report explores the growth in population, employment, and income over the previous 50 years in Georgia and Atlanta. [FRC Report 263](#) (September 2013)

*Georgia's High-Technology Industry and Innovation Capacity* (Cathy Yang Liu). This report describes the demographic composition of the high-technology industry workforce and the innovation capacity of Georgia in comparison to peer Southeastern states between 2000 and 2011. [FRC Report 262](#) (September 2013)

*The Department of Defense Budget Cuts: Economic Impact on Georgia and Selected Counties* (Peter Bluestone). This brief examines the economic impact Department of Defense procurement contracts, grants, and civilian wages have on the state of Georgia as well as selected counties. [FRC Brief 261](#) (February 2013)

*Zero-Base Budgeting for the 21<sup>st</sup> Century Public Administrator* (Ron Shelby). This report discusses the history of Zero-Base Budgeting (ZBB) reform, how to implement classic 1970s style ZBB reform and strengths and weaknesses of the reform. [FRC Report 260](#) (March 2013)

*The Structure and History of Georgia's Job Tax Credit Program* (David L. Sjoquist and Laura Wheeler). This report describes the provisions of Georgia's job tax credit program and how the program has evolved since its inception in 1990. [FRC Report 259](#) (February 2013)

*The Incentives Created by the Tax-Benefit System Facing Low-Income Families in Georgia* (Chelsea Coleman, Kendon Darlington, Mark Rider, and Morgan Sinclair). This report describes the incentives created by the major taxes and public assistance programs facing low income-families in Georgia. [FRC Report/Brief 258](#) (February 2013)

*Georgia Taxpayers and Federal "Pease" Limitations on Itemized Deductions* (Robert Buschman). This brief analyzes the effects of federal limits on itemized deductions and the state income tax liabilities of Georgia taxpayers. [FRC Brief 257](#) (January 2013)

*Lessons for Georgia: Telecommunications Tax Reform in Some of the Other Southeastern States* (Richard Hawkins). This report reviews telecommunications tax reform in other states, discusses four major policy issues and looks at the health of the industry in the other states after reform. [FRC Report 256](#) (January 2013)

## Population, Employment, and Income Trends for Georgia and Atlanta

---

***Property Tax and Education: Have We Reached the Limit?* (David L. Sjoquist and Sohani Fatehin).** This report explores changes over the past decade in property taxes used to fund K-12 education and discusses the future of the property tax for education. FRC Report 255 (January 2013)

***Georgia's Revenue and Expenditure Portfolio in Brief, 1989-2010* (Carolyn Bourdeaux, Nicholas Warner, Sandy Zook, and Sungman Jun).** This brief uses Census data to examine how Georgia ranks in terms of spending and revenue by functions and objects and examines how Georgia's portfolio has changed over time compared to national peers. FRC Brief 254 (January 2012)

***Georgia's Taxes: A Summary of Major State and Local Government Taxes, 19th Edition* (Carolyn Bourdeaux and Richard Hawkins).** A handbook on taxation that provides a quick overview of all state and local taxes in Georgia. FRC Annual Publication A(19) (January 2012)

***The Changes in Jobs Across Georgia's Counties: Changes in Distribution, Type, and Quality of Jobs in Georgia Counties from 2000-2009* (Zackary Hawley).** This brief discusses the changes in the distribution, type, and quality of jobs and examines the changes in percentage by county of total state employment. FRC Brief 253 (December 2012)

***A Snapshot of Georgia School District Expenditures and the Response to the 2008 Recession* (Nicholas Warner and Carolyn Bourdeaux).** This brief provides a short review of expenditures in Georgia's school districts over the past decade (2001-2011) with a particular focus on school district cutback responses to the 2008 recession in overall expenditures as well as within various expenditure categories. FRC Brief 252 (November 2012)

***Impact of the Recession on School Revenues Across the State* (Cynthia S. Searcy).** This report examines the impact of the 2008 recession on inflation-adjusted, per pupil revenues in Georgia and explores the characteristics of districts most adversely affected by revenue shortfalls. FRC Report 251 (November 2012)

***School Facility Funding in Georgia and the Educational Special Purpose Local Option Sales Tax (ESPLOST)* (Eric J. Brunner and Nicholas Warner).** This report reviews Georgia's system of school facility finance, emphasizing the role of the Educational Special Purpose Local Option Sales Tax (ESPLOST). FRC Report/Brief 250 (October 2012)

***Georgia's Revenue and Expenditure Portfolio in Brief, 1989-2009* (Carolyn Bourdeaux, Sungman Jun, and Nicholas Warner).** This brief uses Census data to examine how Georgia ranks in terms of spending and revenue by functions and objects and examines how Georgia's portfolio has changed over time compared to national peers. FRC Brief 249 (August 2012)

(All publications listed are available at [www.aysps.gsu.edu/frc](http://www.aysps.gsu.edu/frc) or call the Fiscal Research Center at 404.413.0249.)

## Document Metadata

*This document was retrieved from IssueLab - a service of the Foundation Center, <http://www.issuelab.org>*

*Date information used to create this page was last modified: 2014-02-15*

*Date document archived: 2013-10-09*

*Date this page generated to accompany file download: 2014-04-15*

*IssueLab Permalink: [http://www.issuelab.org/resource/population\\_employment\\_and\\_income\\_trends\\_for\\_georgia\\_and\\_atlanta](http://www.issuelab.org/resource/population_employment_and_income_trends_for_georgia_and_atlanta)*

---

## Population, Employment, and Income Trends for Georgia and Atlanta

**Publisher(s):** Fiscal Research Center of the Andrew Young School of Policy Studies

**Author(s):** David L. Sjoquist

**Date Published:** 2013-10-09

**Rights:** Copyright 2013 Fiscal Research Center of the Andrew Young School of Policy Studies.

**Subject(s):** Community and Economic Development; Employment and Labor; Government Reform